

Nikon

Windows 98 Second Edition

Nikon Capture 2 (Ver.2.0.2 Updater)

This manual is for those users of D1 series cameras who are running Windows 98 Second Edition, and are updating to Nikon Capture 2 (Ver. 2.0.2).

For Windows 98 Second Edition Users

Registering the Camera under Windows 98 Second Edition (SE)

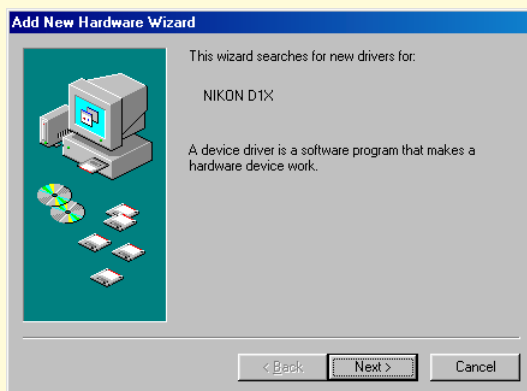
Before you will be able to use your D1, D1X, or D1H digital camera with Nikon Capture 2, you must complete the device registration procedure. If you have already registered the camera for use with Nikon View 4 or will not be connecting the camera to the computer, you will not need to register the camera now. See Nikon Capture User's Manual page 16 for further details.

Step 1

After installing Nikon Capture 2.0.2, turn the camera on, make sure that the mode dial is set to PC, and then connect the camera to the computer using an IEEE 1394 cable.

Step 2

The opening dialog for the Add New Hardware Wizard will be displayed. Click **Next**.



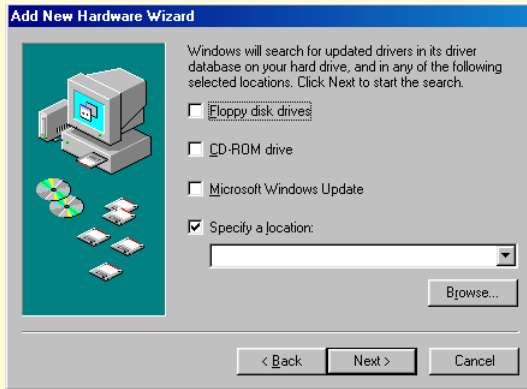
Step 3

Select the search option and click **Next**.



Step 4

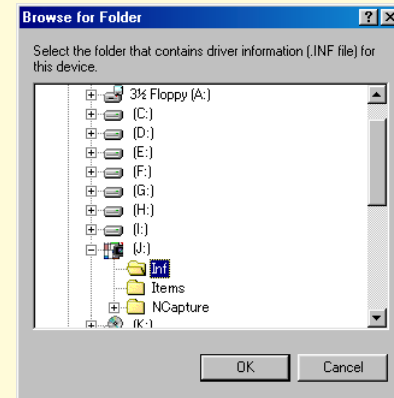
Holding down the shift key to prevent the Welcome dialog from opening automatically, insert the Nikon Capture 2 CD into the CD-ROM drive. Select **Specify a location** and click **Browse**.



If the Welcome dialog appears when the CD is inserted in the drive, close the dialog by clicking the **Exit** button.

Step 5

The **Browse for Folder** dialog shown below will be displayed. Navigate to the Inf folder on the Nikon Capture 2 CD (Ncapture2) and click OK.



Step 6

Confirm that "(Drive letter for CD-ROM drive):\Inf" is displayed in the text box under **Specify a location** and click **Next**.



Step 7

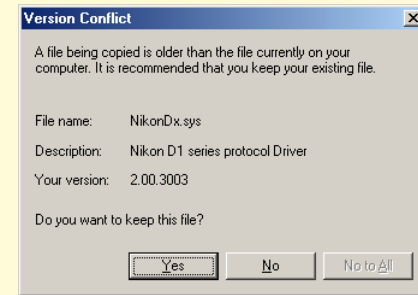
A dialog will be displayed stating that Windows has found the drivers for “Nikon Digital Camera D1 Series”; click **Next**.



If the message, “Windows was unable to find a suitable driver for this device,” is displayed, this may indicate that the Nikon Capture 2 CD was not correctly inserted in the CD-ROM drive or that the correct search location was not specified. Click **Back** to return to the dialog shown in Step 6, where you can confirm that the correct location has been specified.

Step 8

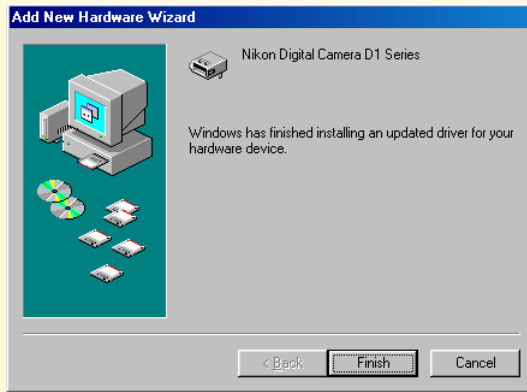
When the installation starts, the **Version Conflict** dialog box will appear. Make sure you click **Yes**.



The required system drivers were automatically installed when you updated Nikon Capture to version 2.0.2; this means that the required drivers are already present on the hard disk. Make sure you click **Yes** to use these drivers.

Step 9

When the installation of the drivers has finished, the dialog shown below will be displayed; click Finish to close the dialog box.



Step 10

Registration should now be complete; refer to page 28 of the Nikon Capture 2 manual (starting at Step 9) to check that the camera has been correctly registered with the system.